

# UNDERWATER LIGHTING SYSTEM



# GLED

YACHT LIGHTING SYSTEMS

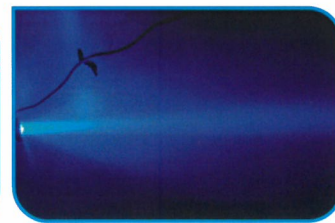
**YACHT AND BOAT TYPE UNDERWATER LED LIGHTING**

**DUE TO THE G-LED POWER LED TECHNOLOGY AND WIDE ANGLE LENS, YOUR OWN AQUARIUM WILL BE RIGHT INFRONT OF YOUR BOAT!**

G-Led underwater lighting series have hard anodic marin aluminum case with 316-L stainless steel frame. The case is 100% waterproof. There is a polycarbonate glass on the front face which is resistant to crush. Out case tested against 10 bar pressure. White and blue color options are available. Due to the surface mount, only 5mm cable hole can be opened on the boat and it can be easily mounted on any kind of boat. A very esthetical view is obtained while the wide angle lens light used in G-Led underwater lamps by providing the light to be emitted homogenously. All models are under warrant for 2 years.



MODEL	SM0315	SM0630	SM0945	SM1260
TOTAL LED	3	6	9	1
TOTAL POWER	15 W	30 W	45 W	260 W
LED TYPE	OSRAM Oslon SSL	OSRAM Oslon Square	OSRAM Oslon SSL	OSRAM Oslon SSL
LUMEN	861	1980	2583	3444
VOLTAGE	10-30 V	24 V	24 V	24 V
CURRENT	700 mA	700 mA	700 mA	700 mA
ENERGY CONSUMPTION	0,08 Ah/hour	0,8 Ah/hour	1,2 Ah/hour	1,5 Ah/hour
INSTALLATION HOLE DIAMETER	5 mm	5 mm	5 mm	5 mm
GLASS SPECIFICATION	POLYCARBONATED GLASS	POLYCARBONATED GLASS	POLYCARBONATED GLASS	POLYCARBONATED GLASS
LED LIFE	40.000/hour	40.000/hour	40.000/hour	40.000/hour
LENS ANGLE	60°	60°	60°	60°
COLOR	White/Blue	White/Blue	White/Blue	White/Blue
INSTALLATION SPACE RECOMMENDED	80cm.	1 mt	1,5 mt	2,0 mt





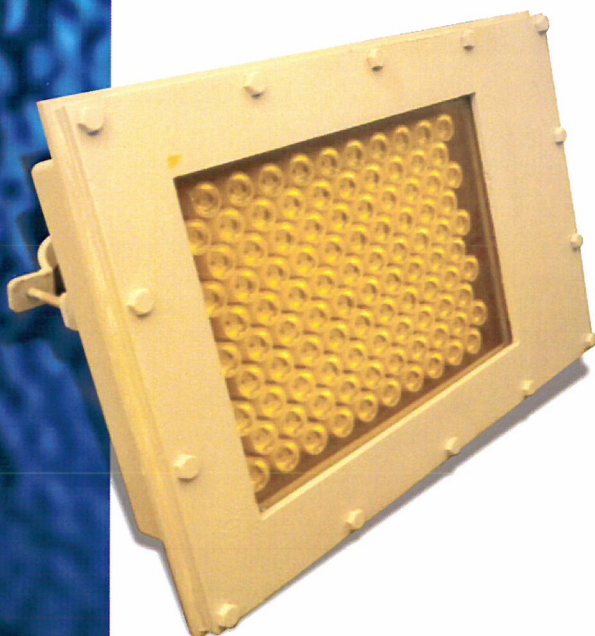
# UNDERWATER LIGHTING SYSTEM

# GLED

YACHT LIGHTING SYSTEMS

## DOCK TYPE LED PROJECTOR

TURN THE DARKNESS OF THE SEA TO  
A MAGICAL AMBIANCE!



G-led projector series have 5083 marine aluminum case. There is a polycarbonate glass on the front face which is resistant to crushing and has no moss retention. The projector is internally pressurized with 0.5 bar nitrogen gas. Out case tested against 10 bar pressure and waterproof up to 10 meters deep. White, blue and turquoise color options are available. By special clamping system it can be easily mounted on any dock and it can move 360 right-left and up-down to provide the desired image on the sea floor. A very esthetical view is obtained while the wide angle lens light used in G-Led underwater lamps by providing the light to be emitted homogenously. All models are under warranty for 2 years.

MODEL	PL0100	PL0150	PL0200
TOTAL LED	100	150	200
TOTAL POWER	100 W	150 W	200 W
LED TYPE	POWER LED	POWER LED	POWER LED
LUMEN	15.000	22.500	30.000
VOLTAGE	100/240 Volt AC	100/240 Volt AC	100/240 Volt AC
GLASS SPECIFICATION	POLYCARBONATED	POLYCARBONATED GLASS	POLYCARBONATED GLASS
LED LIFE	GLASS	33.000/hour	33.000/hour
LENS ANGLE	33.000/hour120	120°	1200°
COLOR	White/Blue/Turquoise	White/Blue/ Turquoise	White/Blue /Turquoise



**Mrk:** Yalı Mahallesi İçmeler No:69 Bodrum / Muğla - TÜRKİYE  
T. +90 252 316 00 63 F. +90 252 316 0163 info@giayachting.com  
**GIA Marine Shop:** Aydıntepe Mah. Sahilyolu Cad. Alize İş Merkezi  
No:191/32 Tuzla / İstanbul - TÜRKİYE  
T. +90 216 494 1060 F. +90 216 494 1066 tuzla@giayachting.com

**GIA**  
Y A C H T I N G

www.giayachting.com